


Gilda's Club South Florida **LAUNCHING A LEGACY**



**GILDA'S CLUB
SOUTH FLORIDA**

An Affiliate of the
CANCER SUPPORT COMMUNITY





"There's one link that we really miss in healthcare, and that's support groups that patients need, and that's where Gilda's Club comes in...Gilda's Club's role in the recovery and cure in cancer patients cannot be overemphasized. We know that patients who get to support groups and who continue to have positive attitudes and stay strong mentally do better irrespective of treatment."

- Dr. Atif Hussein, Hematologist & Oncologist

Overview

Gilda's Club South Florida is a one-of-a-kind model of social and emotional support, professionally facilitated by licensed mental health professionals and designed by and for those who know first-hand what it means to live with cancer. Our programs and services are offered free of charge to anyone impacted by cancer.

According to the Cancer Support Community's Cancer Experience Registry, more than 40% of cancer patients are at risk of clinical depression and 50% are at risk of clinical anxiety. Research has also shown that support improves health outcomes for cancer patients including their mental and physical health, health habits, mortality risk, and it also reduces health care costs.

At Gilda's Club South Florida our goal is to improve the health and well-being of people affected by cancer through increased social ties, sense of control and hope and meaning. This is accomplished through our evidence-based program consisting of professionally-led support and networking groups, healthy lifestyle workshops, educational lectures, social activities, and resources, all offered **free of charge** to anyone impacted by cancer.

Since July 2015 Gilda's Club has seen participant growth by 277%. The demand for our services has outpaced the Clubhouse capacity

so much so that support group rooms are overflowing and the parking lot is full long before our last members arrive.

This project includes the purchase of a new facility that will triple the size of our clubhouse to 15,000 square feet allowing us to comfortably serve more than 5,000 people

rooms, work space for additional staff and interns and be ADA compliant to better serve people with disabilities.

The project is estimated to cost \$4.6 million dollars. The estimated project budget is based on the square footage requirements for the new building, an estimated

"Such an incredible organization! Their services are free of cost and invaluable to those who have been affected by cancer. The staff is amazing and truly care about making a difference."

- Tayana Carper, Business Owner

a year. Renovations will create a home-like space for cancer patients and their families as well as include additional rooms for support groups, a teaching kitchen, a fitness room, multipurpose/art room, a dedicated space for our children and teen program, individual counselling

construction contingency, furniture and equipment, and moving/relocation costs. Gilda's Club sold its previous building and was able to reinvest \$1.5 million into the new facility.

About Gilda’s South Florida

The first Gilda’s Club was established in 1995 by friends and family of SNL comedian, Gilda Radner, who died of cancer in 1989. Her experience at The Wellness Community led to her vision that no one should have to face cancer alone. In 1997, Gilda’s Club South Florida (GCSF) became the second affiliate in the country to open its signature red doors, founded by two families in memory of their daughters to provide a caring community in our local tri-county area.

Today, Gilda’s Club is the largest provider of free psychosocial cancer support in South Florida, annually serving more than 5,000 adults and children. Our evidence-based programming, which has shown to decrease levels of depression and distress, includes support groups, Healthy Lifestyle workshops, social activities, educational lectures and community resource information. We provide something for every age group and life situation, including children, teens, and families affected by cancer. Best of all, our programs are offered at no cost to anyone impacted by a cancer diagnosis.

The Gilda’s Club South Florida mission is to ensure all people impacted by cancer are empowered by knowledge, strengthened by action, and sustained by community.



“We owe it to our members and the community to be bold and accept the increased challenge to fulfill our mission. This building is a game changer towards excellent service delivery and our sustainability.”

Kim Praitano
President/CEO





The Project & Vision

Over the past 5 years, Gilda’s Club has witnessed a 277% increase in members served and 37% increase in visits to our clubhouse. The demand for our services has outpaced our capacity.

Expansion of services, number of people served and number of staff are limited primarily by physical capacity. The investment in a property that is 15,000 square feet will more than double the size of our Clubhouse, allowing us to offer and accommodate more programming to more individuals impacted by cancer a year.

The new facility will be accessible, energy efficient, and still have the home-like setting that is synonymous with Gilda’s Club. Renovations will create four spacious support group rooms that will allow us to offer more groups and comfortably seat up to 14 people with ADA compliance in mind for our members with walkers and wheelchairs. The expansion of services also necessitates the inclusion of counselling rooms to comfortably meet with individuals and families. A designated area will be created to accommodate our growing Children’s and Teen program that will allow us to provide age appropriate programming and still be in a semi-open concept where social workers can supervise the children and volunteers.

Furthermore, with health and nutrition as primary concerns for cancer patients and caregivers, a teaching kitchen and expanded fitness room will help us meet the growing needs of our members. The teaching kitchen will be large enough to host cooking classes for up to 20 people with space for a chef to cook, plus

seating and prep stations for member participation. The increasing popularity of our healthy lifestyles program will benefit from the expanded fitness room that will hold up to 30 people for classes such as yoga, Tai Chi, dance, and strength training.

The new facility will be accessible, energy efficient, and still have the same home-like setting that is synonymous with Gilda’s Club.

Larger scale community and member-based events such as our educational lectures, annual Halloween party, and holiday celebrations will benefit from the addition of a large multipurpose room that can be used by our program and development teams. Throughout our 20+ years in the community, many of our members have expressed that Gilda’s Club is their second home. Our vision is to ensure that the renovations and decor keep that as our primary focus as we create a welcoming atmosphere for everyone that walks through our Red Door.

The Benefit

Since 1997, Gilda’s Club has provided its evidence-based program *at no cost* to thousands of individuals impacted by cancer in South Florida.

Whether you have a cancer diagnosis, have a loved one with a diagnosis, or have lost someone to cancer, Gilda’s Club is here to provide free social and emotional support during this critical time.

Research on cancer patient support groups show an overall positive impact on morale and other quality of life factors, short of prolonging life. In 2020, 75% of Gilda’s Club members receiving supportive services surveyed reported reduced risk for depression and level of distress.

Through participation in the Gilda’s Club program we have seen encouraging trends of lower distress among members. Additionally, there’s a promising trend that shows many members who attend groups had reduced concerns around anxiety and depression.

With the number of cancer diagnoses rising each year*, survival rates increasing, and cancer becoming more of a chronic condition, a larger facility will provide even greater impact by allowing us to serve more individuals in our community.

Through their participation in the Gilda’s Club program, these individuals will have the opportunity to decrease social isolation and improve their overall health outcomes, which has been shown to reduce healthcare costs. In addition, our program will help increase their knowledge of cancer and ultimately helps to improve partnerships between cancer patients and their healthcare team.

* Last year, there were an estimated 150,500 new cases of cancer diagnosed in the state of Florida.

The Budget

Facility Expenses			
New Building Acquisition		\$3,750,000	14,727 sf
Renovation		\$750,000	
Relocation costs		\$100,000	moving, furniture, etc.
TOTAL VISION		\$4,600,000	

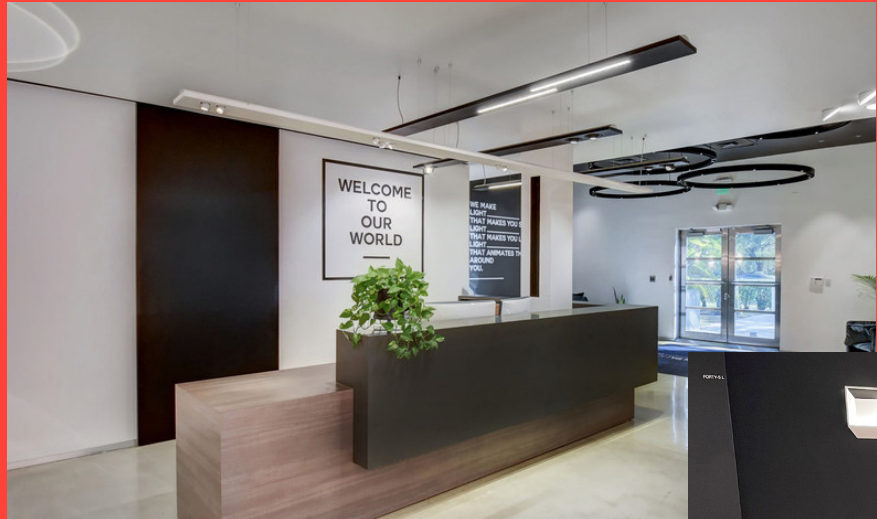
Naming Opportunities

Premiere Entrance East	\$500,000	\$500,000
Premiere Entrance West	\$500,000	\$500,000
Multi-Purpose/Event Center	\$500,000	\$500,000
Front Hallway	\$350,000	\$350,000
Reception Center Marquis	\$250,000	\$250,000
Education Center	\$250,000	\$250,000
Children’s Area	\$150,000	\$150,000
Teen Area	\$150,000	\$150,000
Outdoor Patio	\$150,000	\$150,000
Teaching Kitchen	\$100,000	\$100,000
Library	\$100,000	\$100,000
(3) Support Group Room	\$100,000	\$300,000
Yoga Room	\$100,000	\$100,000
Family/Kids Room	\$75,000	\$75,000
Art Room	\$50,000	\$50,000
Staff Cafe	\$50,000	\$50,000
(12) Offices	\$25,000	\$300,000
(30) Launching a Legacy Wall	\$10,000	\$300,000



Our Clubhouse

4850 W. Prospect Road
Fort Lauderdale, FL 33309





Teaching Kitchen



Support Group Room



Education Center

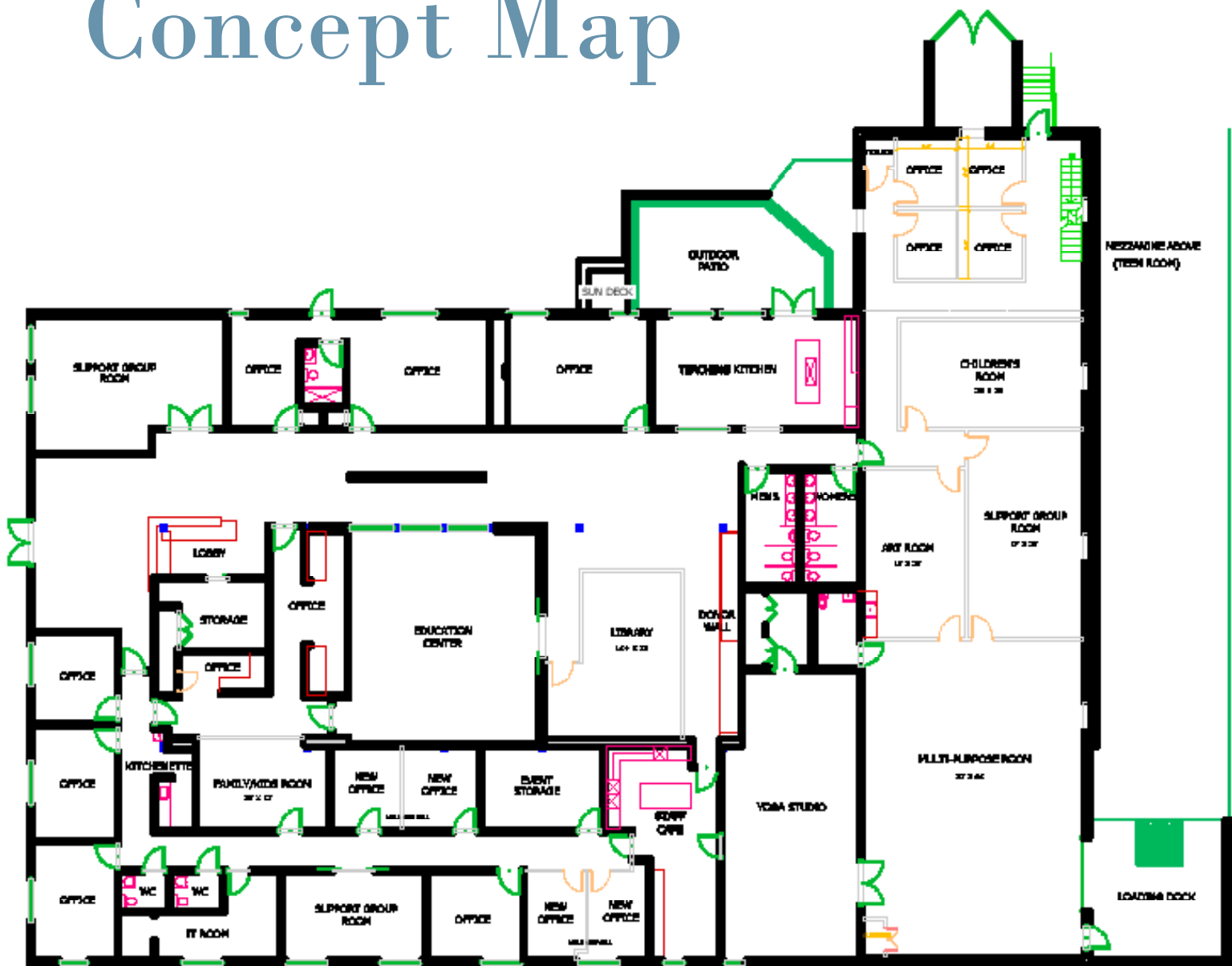


Staff Cafe



Outdoor Patio

Renovation Concept Map



Sponsorship and naming opportunities available.
For additional information or to schedule a meeting, please contact:

Kim Praitano, President/CEO
kimp@gildasclubssouthflorida.org

Suzanne Tharpe, VP, Development
suzanne@gildasclubssouthflorida.org

Leonard Goldberg, Capital Campaign Chair
lgoldberg@goldaviation.com