

# FISCAL YEAR 2022 - 2023



**GILDA'S CLUB  
SOUTH FLORIDA**

An Affiliate of the  
CANCER SUPPORT COMMUNITY



**COMMUNITY is  
Stronger than Cancer**

# GILDA'S CLUB SOUTH FLORIDA COMMUNITY LEADERSHIP

## BOARD OF DIRECTORS

**Jon Polenberg, *Board Chair***  
*Becker & Poliakoff*

**Kristina Rua, *Vice Chair***  
*Sylvester Comprehensive Cancer Center*

**Randy Mehlhop, *Treasurer***  
*Walgreens*

**Cathy Brown, *Secretary***  
*Community Foundation of Broward*

**Leonard Goldberg, *Capital Campaign Chair***  
*Gold Aviation Services*

**Gerald Angeli**  
*Stirling Operations*

**Kelly Bartholomew**  
*KPMG*

**Marianela Collado**  
*Tobias Financial Services*

**Tony DuBose**  
*Legacy Wealth Management*

**Meredith Feinberg**  
*Memorial Cancer Institute*

**Corey LeBlanc**  
*Locality Bank*

**Leonard Pounds**  
*Nova Southeastern University*

**Lorraine Shim**  
*Broward Partnership*

**Trudy Spence**  
*Southern Glazer's Wine & Spirits*

**Jennifer Tallow**  
*Walden University*

**Rick Tobin**  
*Premier Hotel Realty*

**Giancarlo Zuniga**  
*Truist Bank*

## HONORARY BOARD

**Wayne Abbott**

**Sara Callari**

**Trevor Fried**

**Stephen Ferrante**

**Ron Schagrin**

## STAFF

**Kim Praitano**  
*President & CEO*

**Kahli Mercik**  
*VP, Programs and Services*

**Kristian White**  
*VP, Development*

**Valerie Pigatt**  
*Controller*

**Jacqui Ramirez**  
*Marketing and Events Director*

**Victoria Bennett**  
*Program Coordinator - Education*

**Laura Hooker**  
*Program Manager - Healthy Lifestyle*

**Kimberly Hill**  
*Development Officer*

**Nicole Monnin**  
*Social Worker & Program  
Coordinator - Children & Family*

**Emily Jazombek**  
*Outreach Coordinator*

**Lisette Torres**  
*Operations Manager*

**Linda Tiga Hernandez**  
*Social Worker & Hispanic/Latino  
Outreach Coordinator*

**Ariana Vega Johnson**  
*Social Worker & Care Coordinator*

# Pillars of Support

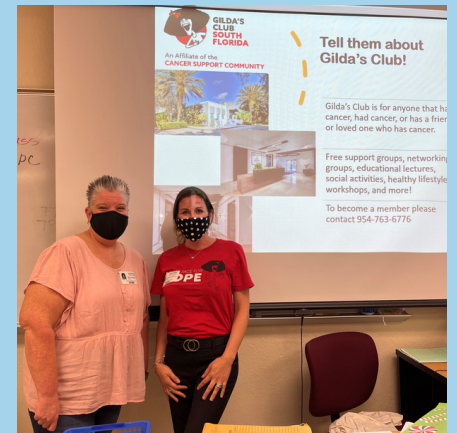
- Group Support
- Healthy Lifestyle Classes
- Educational Workshops
- Social Activities
- Child, Teen & Family Programs
- Referrals & Resources

## Top 5 Cancers We Serve

- Breast
- Lung
- Ovarian/  
Uterine/Cervical
- Lymphoma
- Colon/Rectal

## Total Individuals Who Attended a Women of Color Presentation

157



# Core Values

We believe that community is stronger than cancer.

- Commitment to Excellence
- An Essential Part of Cancer Care
- No Charge for Services
- Collective Wisdom and Individual Experience
- Empowerment through Community
- Respectful and Inclusive



**622**

total number of new participants between July 2022 - June 2023



**10,551**

total number of visits to all programs between July 2022 - June 2023



**3,895**

total number of individuals served between July 2022 - June 2023



# Group Support & Networking

## Always professionally facilitated and offered in-person & virtually

Group support provides you opportunities for connection with others who are sharing a similar experience and the comfort in knowing you are not alone. At Gilda's Club South Florida, we currently offer free weekly support groups that are facilitated by licensed mental health professionals.



**328**

total number of  
Support Groups  
offered between  
July 2022 - June  
2023



**1,660**

total number of  
individuals who  
attended Support  
Groups between July  
2022 - June 2023





# Our Healthy Lifestyle Program

## Strengthening mind, body and spirit

These classes and workshops are led by professionals and skilled volunteers and include a broad range of body-movement, stress reduction, and creative expression classes to increase members' skills and their sense of control and well-being.



**431**

total number of  
Healthy Lifestyle  
activities offered  
between July  
2022 - June 2023



**2,401**

total number of  
individuals who  
attended Healthy  
Lifestyle activities  
between July 2022 -  
June 2023

# Educational Workshops

## Empowering through knowledge

Led by leaders in the fields of oncology, integrative medicine, nutrition, and complementary modalities. Educational workshops provide you with opportunities to acquire new skills, information, and techniques to learn how to live with cancer. Cancer education may address diagnoses, treatments, side effects, and survivor challenges, but can also address topics like insurance, finances, legal issues, nutrition, and more. Each month, we offer a variety of topics taught by subject-matter experts in a safe, informal setting where you can ask questions and get answers.



**88**

total number of  
Education  
Programs offered  
between July 2022 -  
June 2023



**2,381**

total number of  
individuals who  
attended Education  
Programs between July  
2022 - June 2023

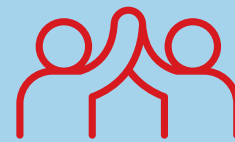




# Social Programs

## Reducing isolation through community

Life does not stop with a diagnosis of cancer. We offer a warm and welcoming space for people living their daily lives, even virtually. Social activities are among the most popular offerings at Gilda's Club. From our holiday parties to monthly themed social events, these activities are meant to build a sense of community and belonging for all our participants. All social activities are free and open to members, and their family and friends.



**95**

total number of  
Social Events offered  
between July 2022 -  
June 2023



**775**

total number of  
individuals who  
attended Social Events  
between July 2022 -  
June 2023

# EVENT HIGHLIGHTS OF 2022 - 2023



## 2022 Gilda's Race for Hope

Thank you to everyone who came out to support **Gilda's Club South Florida** at Nova Southeastern University on Saturday, September 17th. Our 101 amazing racers and walkers raised over **\$50,000** to support our free cancer support programs and our cancer community. Thank you to all of our runners and walkers for their dedicated and commuted to our mission.



## Jet, Cruise en Rouge

Our **2023 Jet, Cruise en Rouge** was a resounding success, raising over **\$172,000** to help fund free cancer support resources, programs, and classes for anyone impacted by any cancer. Thank you to our planning committee, our sponsors, and our supporters for contributing to the event's success. You all played a vital role in driving forward our mission and vision.



## Live from South Florida ... It's Saturday Night

Our **27th Annual Live from South Florida ... It's Saturday Night** raised over **\$130,000**, helping us expand our cancer support program's reach and impact throughout South Florida. Congratulations to our inaugural Honoree, **Leonard Goldberg**, for winning the Roseanne Rosannadanna Volunteer Award for his dedication to our organization.

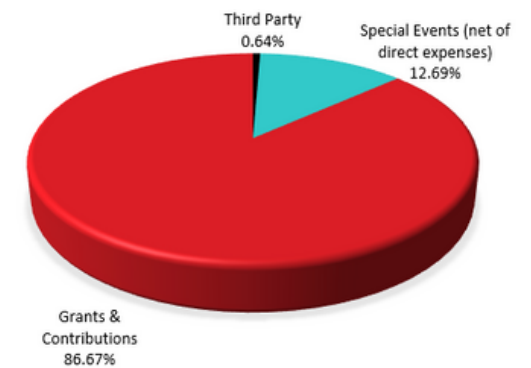
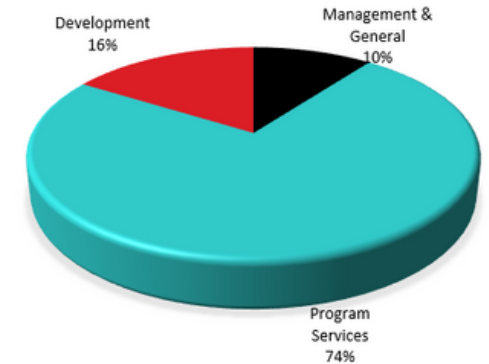
# FINANCIALS

Third Party	\$ 13,076
Special Events (Net of Direct Expenses)	\$ 259,055
Grant & Contributions	\$ 1,768,624
<b>Total Revenues</b>	<b>\$ 2,040,755</b>

Management & General	\$ 144,485
Program Services	\$ 1,030,147
Development	\$ 226,621
<b>Total Expenses</b>	<b>\$ 1,401,253</b>

**Total Net Assets** **\$ 5,040,964**

**Organizational Budget** **\$ 1,980,000**



# THANK YOU TO OUR DONORS

THE FOLLOWING INDIVIDUALS, CORPORATIONS, AND FOUNDATION GENEROUSLY DONATED \$1,000 OR MORE BETWEEN JULY 2022 - JUNE 30, 2023

Amazon.com  
Andy Elisburg  
Ann Flory  
AstraZeneca Pharmaceuticals LP  
Baptist Health South Florida  
Baptist Health South Florida  
Barbara and Jon Polenberg  
Batchelor Foundation  
Big Dog Station  
Blackbaud Giving Fund  
Brandano Displays, Inc.  
Broward Health  
Bruce Rhine  
Cancer Support Community (National)  
Carla and Rick Tobin  
Cathy and Alan Fant  
Cathy and Brian Brown  
Charles F. and Esther M. Frye Foundation  
Chris Giordano  
Christina and Charles Fedderwitz  
City of Fort Lauderdale  
Cleveland Clinic Health System  
Community Foundation of Broward, Inc.  
Connie Chan and Gerald Angeli  
Coverys Community Healthcare Foundation  
David Stillson  
Denise Guarino  
Diana and Kristian White  
Diane Leighton  
Dr. John T. Macdonald Foundation  
DuBose Family Charitable Fund  
Elizabeth & Daniel O'Connor Family Foundation  
Kristina and Julian Rua  
Leadership Broward Foundation

Embraer  
Enterprise Holdings Foundation  
Exelixis, Inc.  
FLASCO Foundation, Inc.  
Freddie Nay  
Frederick A. DeLuca Foundation  
Gail Leach  
Genentech  
Gold Aviation Services, Inc.  
Grail  
H I foundation  
Harold D. Franks Cancer Fund of Community Foundation  
HCA Healthcare Foundation  
Heather Chabot  
Helene and Donald Hirschfeld  
Holman Automotive Group, Inc.  
Humana  
Incyte Corporation  
Jeffrey Halfon and Antonio Marin  
Jeffrey Schneider  
Jennifer and Steven Tallow  
Jennifer Starkey  
Jil Simon and Leonard Goldberg  
Joan Ast and Alan Ast  
John E. and Nellie J. Bastien Memorial Foundation  
Joseph F. Stein Family Foundation Inc.  
Judy Snook  
Kaye Jacobs  
Kim and Colin Campbell  
Kim Praitano  
Leonard Pounds  
Leonard Weiss  
Lorraine Shim

Lozick Family Foundation  
Maraia David Weinberg  
Mary and Alan Sutcliffe  
Mary and Alex Mackenzie Community Impact Fund  
Matt Berke  
Memorial Healthcare System  
Our Fund Foundation  
Parkland Cares Inc  
Peck Family Fund  
Peter Woolf  
PIP Printing and Marketing  
Randall Mehlhop and Mark Motley  
Robert DeLizza  
Rotary Club of Weston  
Sharon and Allen Markowitz  
Sharon Sullivan  
Sick Puppies Comedy  
Simply Healthcare Plans Inc  
Stephanie Ansin and Earl Stewart  
Steven Naron  
Steven Reeves  
Taft Foundation  
TD Charitable Foundation  
Tobias Financial Advisors  
Trevor Fried  
United Way of Broward County  
University of Miami  
Walgreens  
Wawa Foundation  
William and Mildred Lasdon Foundation  
William Margiloff  
William R. Watts Foundation, Inc.

